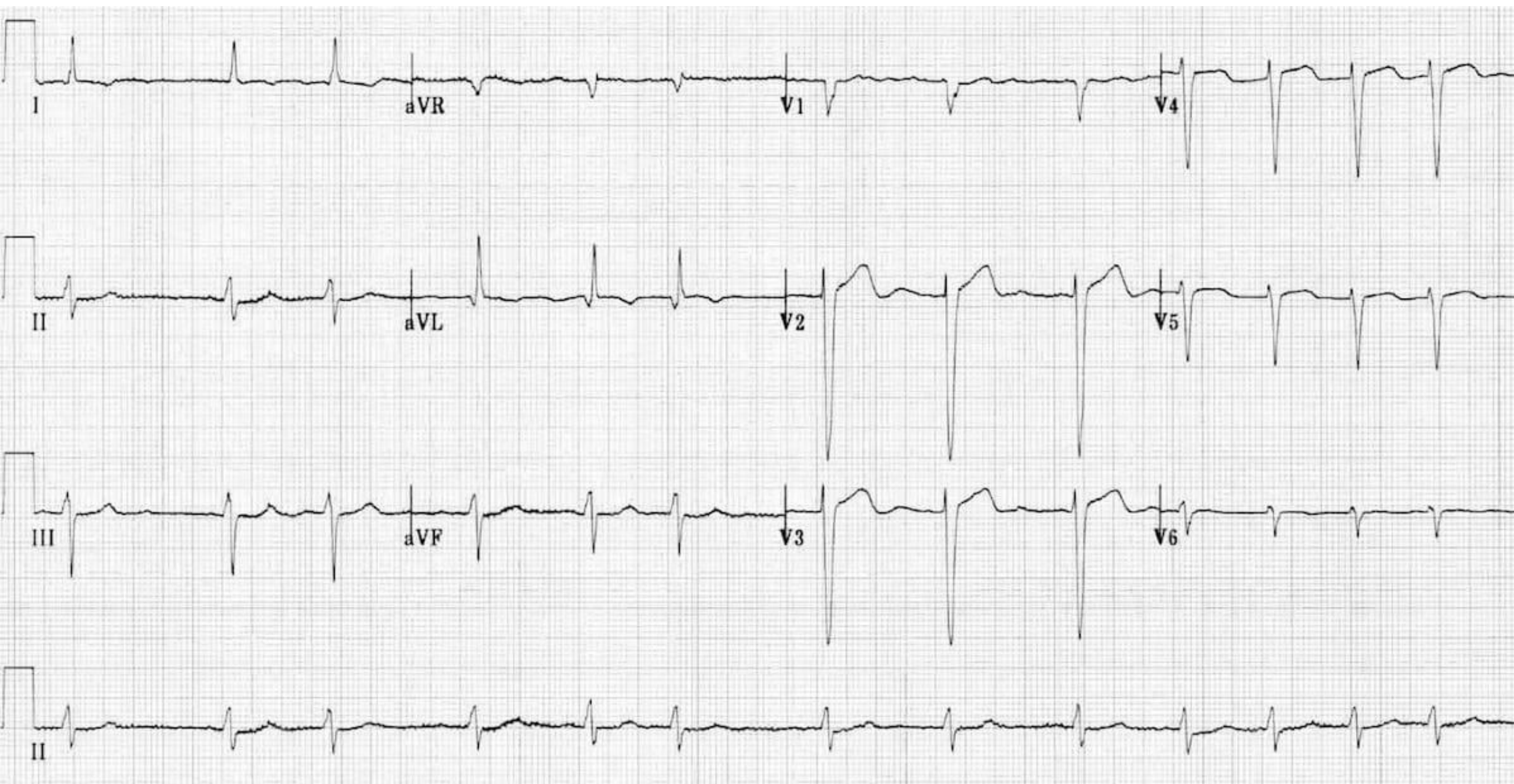
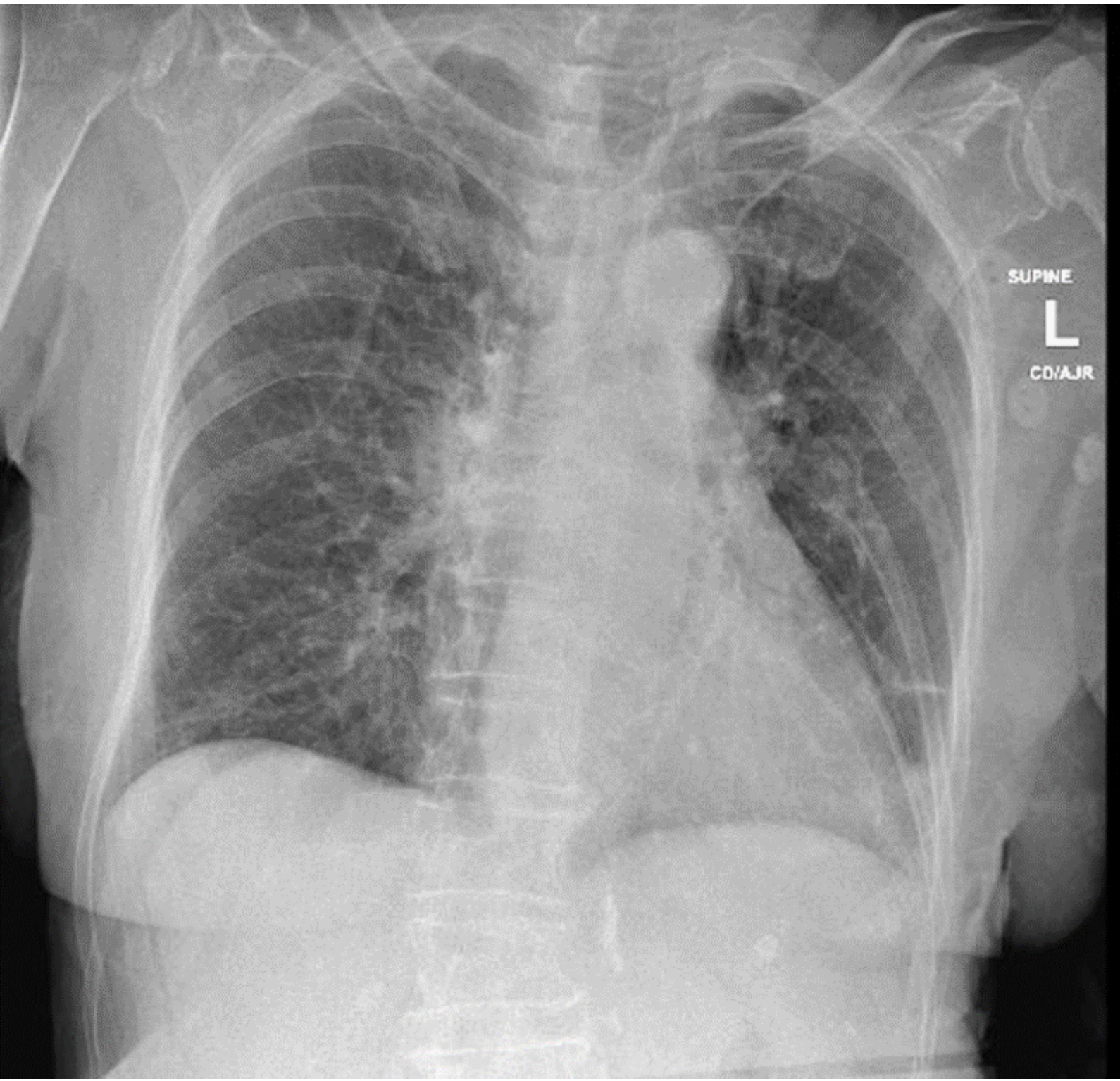


ECG

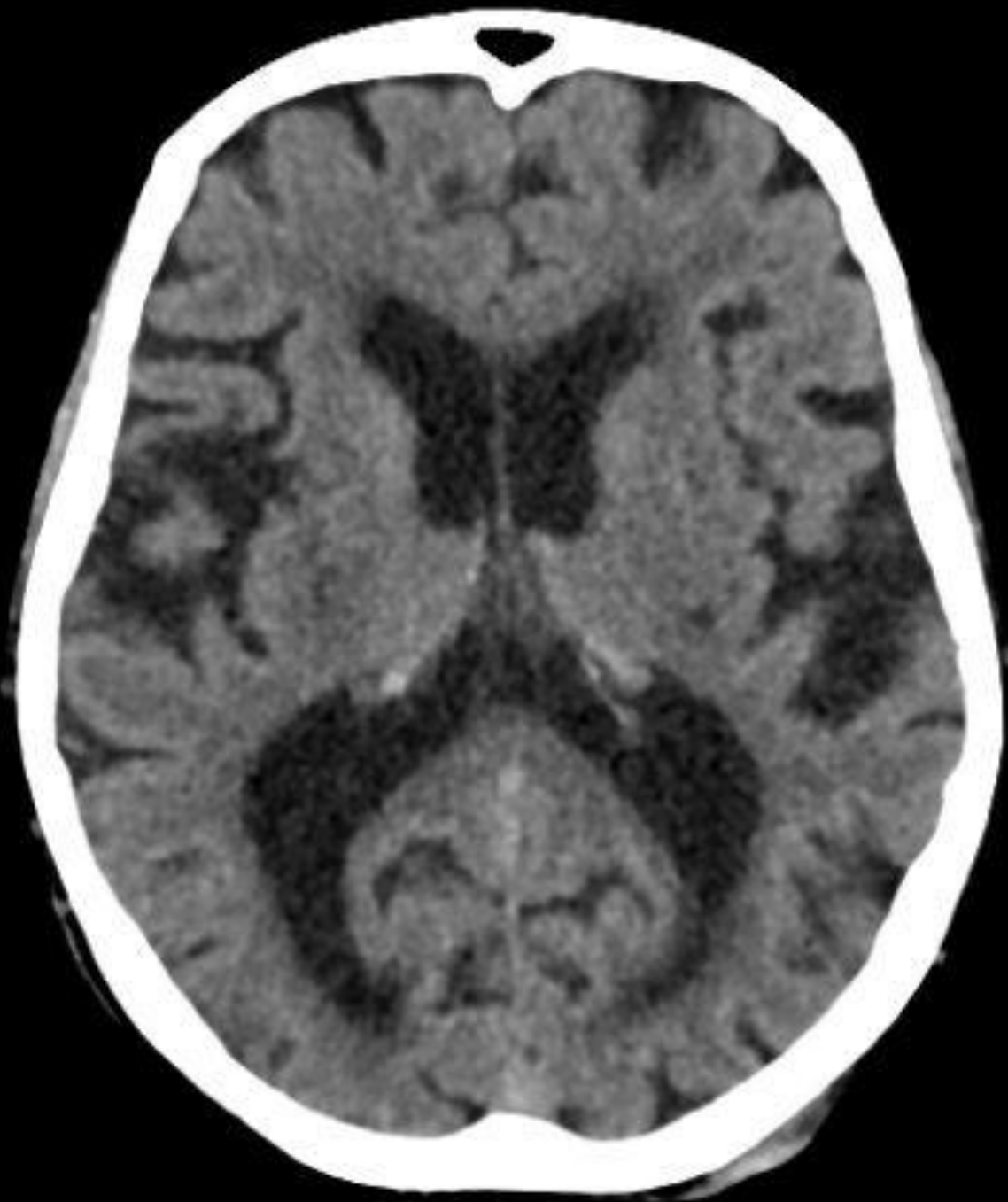


Source: <https://litfl.com/wp-content/uploads/2018/08/ECG-Atrial-Fibrillation-3.jpg>



Pelvic Xray







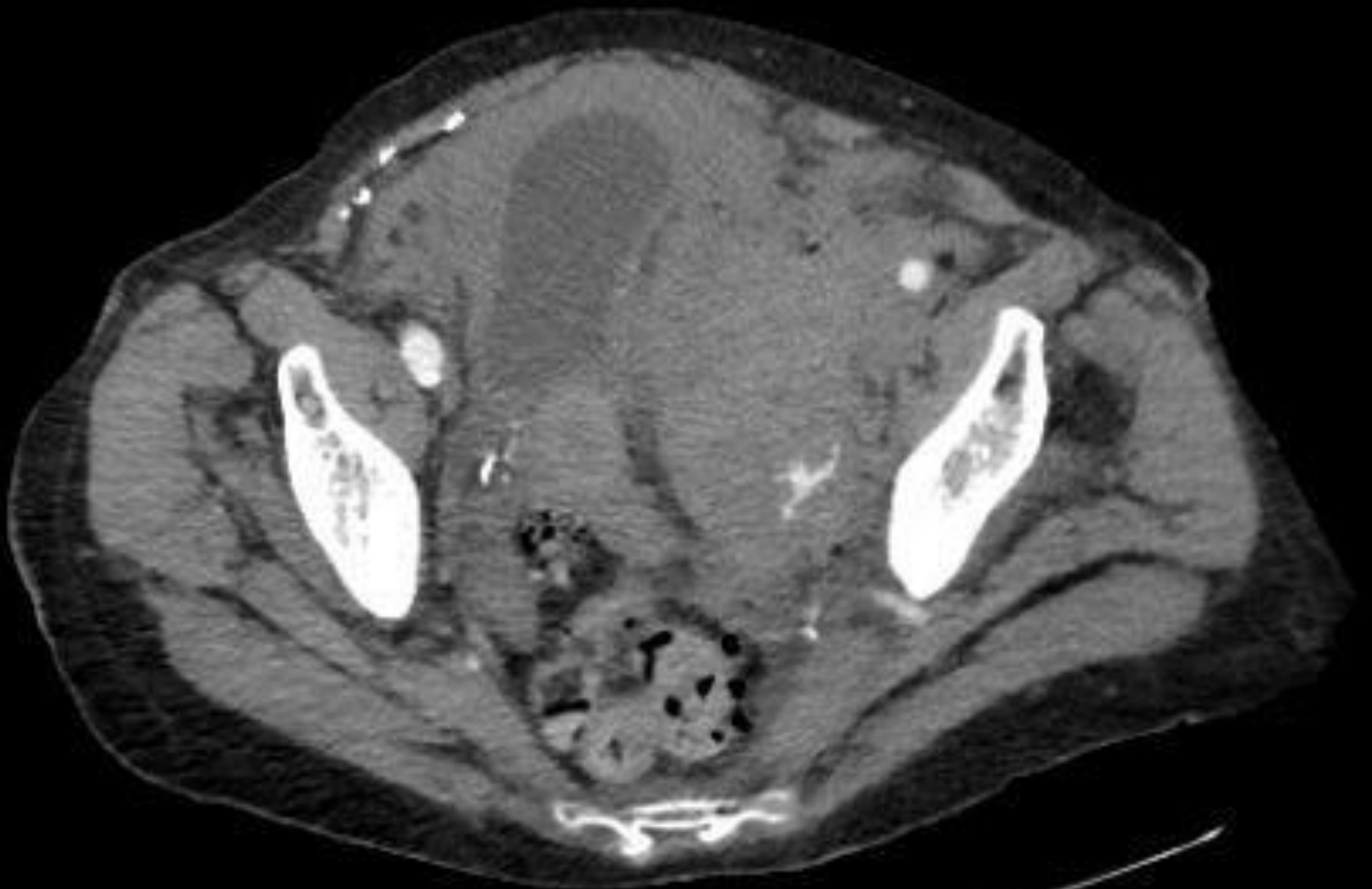
CT Pelvis (coronal)



CTA Pelvis (axial)



CT Spine (sagittal)



CT report

IMPRESSION

Head:

- No traumatic intracranial abnormality.

Chest:

- Fractures head of left 2nd and 3rd ribs.
- Left distal clavicle intra-articular fracture, without AC joint widening.
- Suspected superior manubrial fracture.
- No traumatic intrathoracic abnormality.
- Incidental 31 mm saccular thoracic aortic aneurysm, without features of rupture.

Abdomen/pelvis:

- Extensive left pubic bone fractures with moderate volume of pelvic/abdominal and left thigh haemorrhage. Multiple foci of active bleeding involving the pelvic haematoma and in the proximal medial thigh.
- No solid organ injury evident in the upper abdomen. Delayed phase imaging may be helpful to exclude bladder injury, particularly in the setting of haematuria.

Spine:

- No cervical spine fracture.
- Inferior endplate fractures of T10, likely T9 without height loss.
- Crush fracture of L3 with severe height loss and mild retropulsion.
- Left sacral fracture, non-displaced.