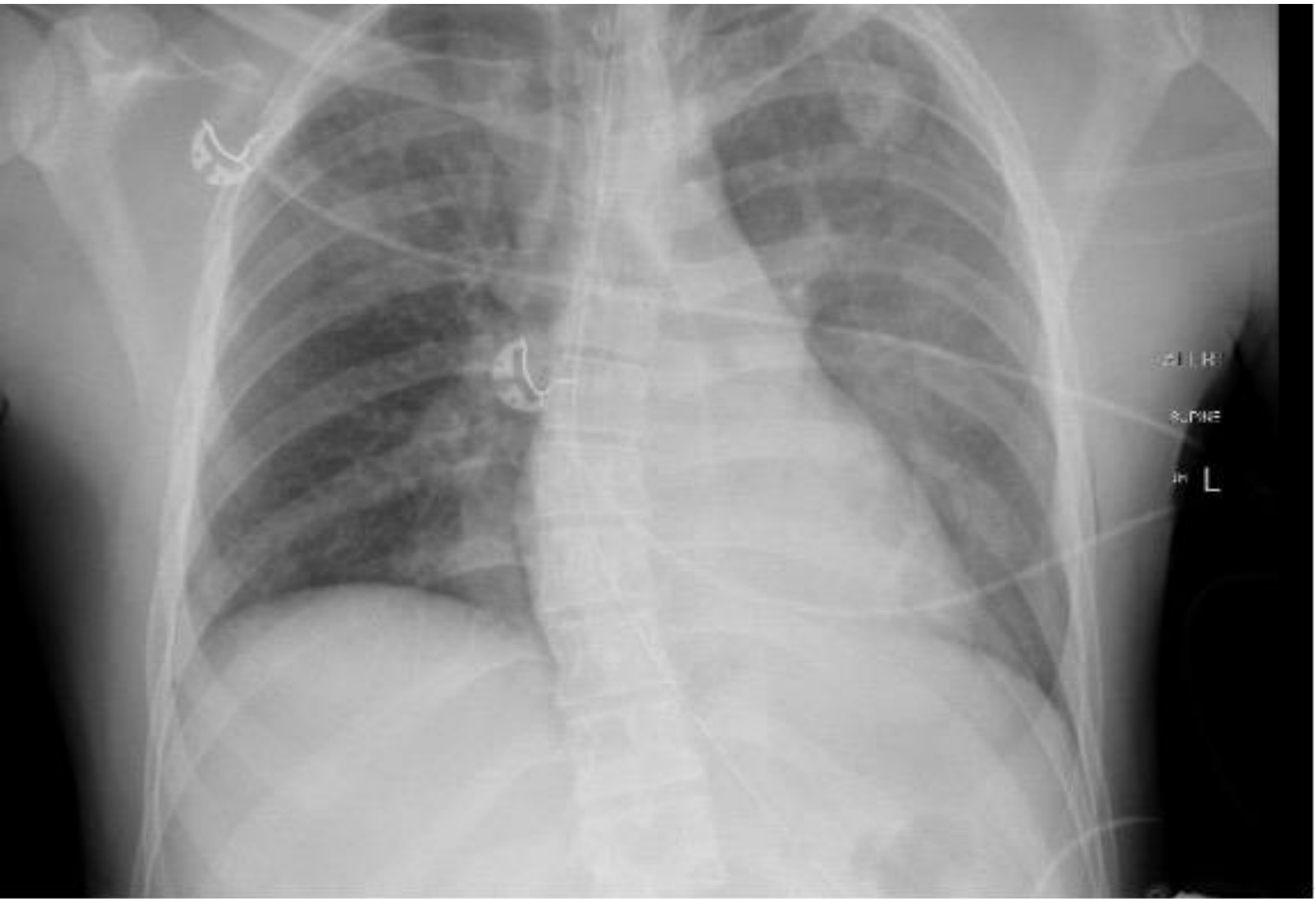


Question 2a: CXR



Question 2b: Pelvic Xray



Question 2c: EFAST RUQ



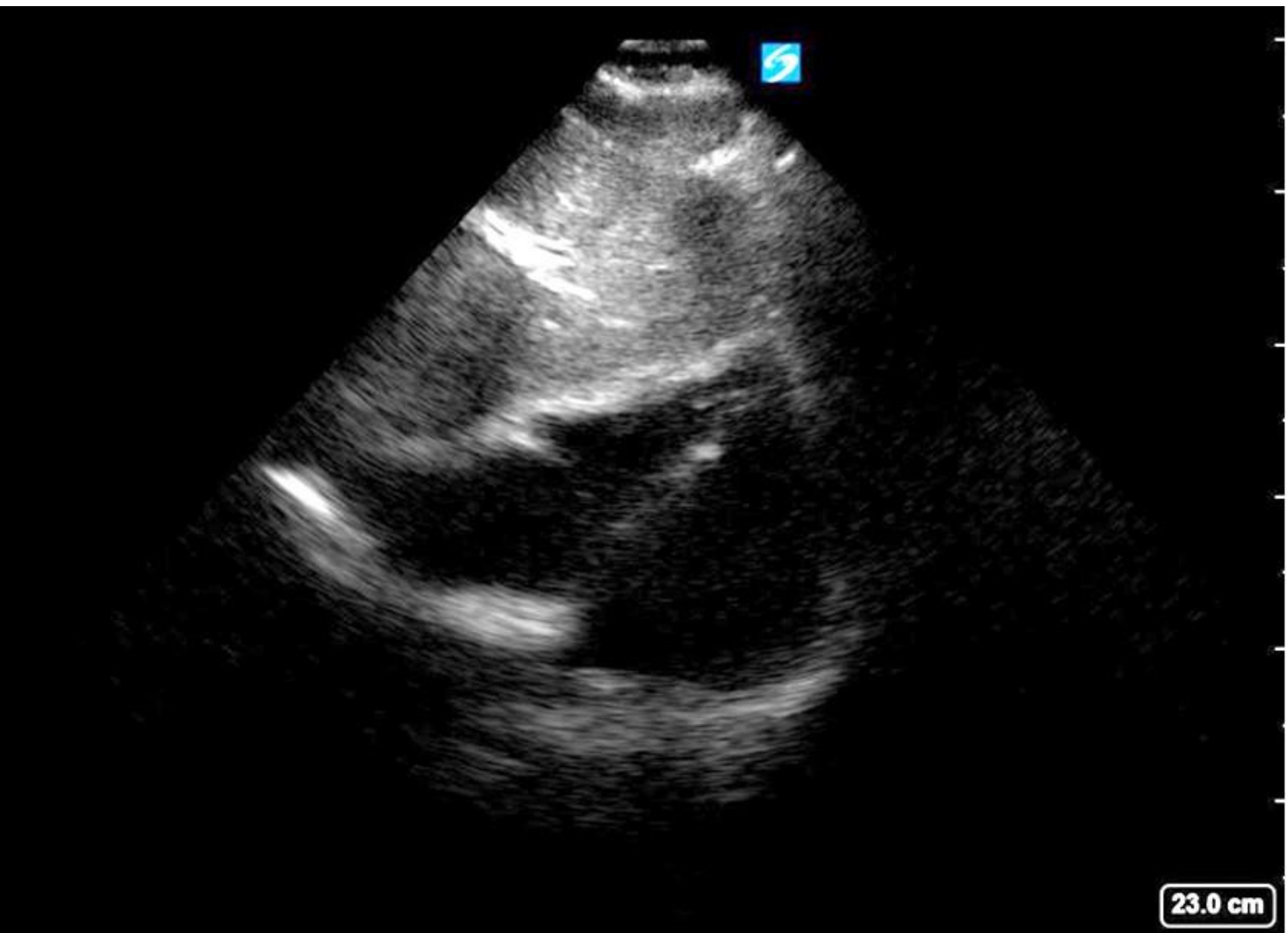
Question 2d: EFAST LUQ



Question 2e: EFAST Bladder/pelvis

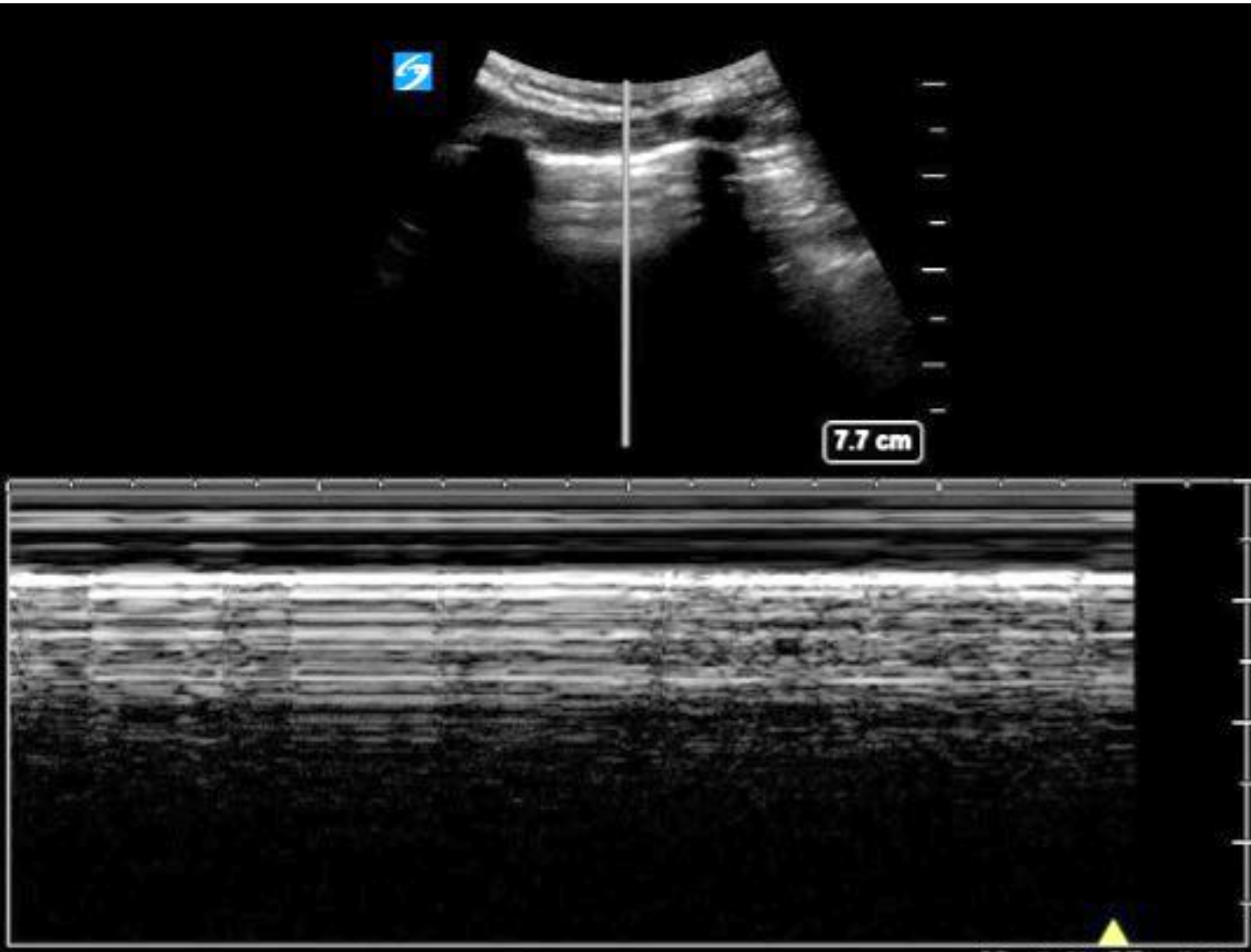


Question 2f: EFAST Subxiphoid

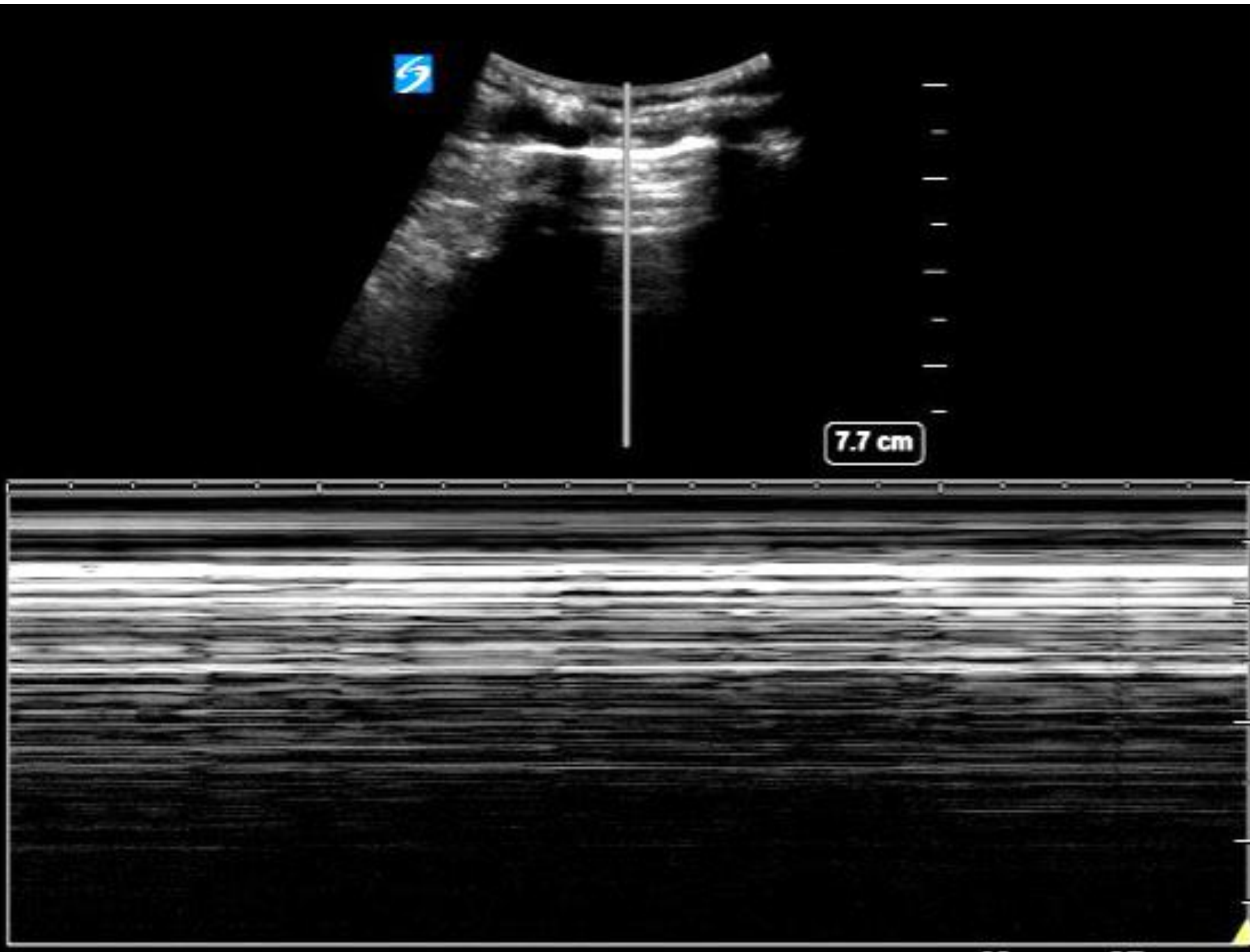


23.0 cm

Question 2g: EFAST R Lung



Question 2h: EFAST L Lung 1



Question 2i: EFAST L Lung 2



Question 4: CT

<https://vimeo.com/538909400/40d3a472d8>

Question 5

AAST Spleen injury scale (1994 revision)

Grade*	Type of injury	Description of injury	ICD-9	AIS-90
I	Haematoma	Subcapsular, < 10% surface	865.01 865.11	2
	Laceration	Capsular tear, < 1cm parenchymal depth	865.02 865.12	2
II	Haematoma	Subcapsular, 10%-50% surface area; intraparenchymal, <5 cm in diameter	865.01 865.11	2
	Laceration	Capsular tear, 1-3cm parenchymal depth that does not involve a trabecular vessel	865.02 865.12	2
III	Haematoma	Subcapsular, > 50% surface area or expanding; ruptured subcapsular or parenchymal hematoma; intraparenchymal hematoma > 5 cm or expanding		3
	Laceration	> 3 cm parenchymal depth or involving trabecular vessels	865.03 865.13	3
IV	Laceration	Laceration involving segmental or hilar vessels producing major devascularization (>25% of spleen)		4
V	Laceration	Completely shattered spleen	865.04	5
	Vascular	Hilar vascular injury with devascularizes spleen	865.14	5

*Advance one grade for multiple injuries up to grade III

Question 5

AAST Liver injury scale (1994 revision)

Grade*	Type of injury	Description of injury	ICD-9	AIS-90
I	Haematoma	Subcapsular < 10% surface	864.01 864.11	2
	Laceration	Capsular tear < 1cm parenchymal depth	864.02 864.12	2
II	Haematoma	Subcapsular 10-50% surface area; intraparenchymal, < 10cm diameter	864.01 864.11	2
	Laceration	1-3cm parenchymal depth, < 10 cm in length	864.03 864.13	2
III	Haematoma	Subcapsular > 50% surface area or expanding, ruptured subcapsular or parenchymal haematoma. Intraparenchymal haematoma > 10cm or expanding		3
	Laceration	> 3cm parenchymal depth	864.04 864.14	3
IV	Laceration	Parenchymal disruption 25-75% of hepatic lobe or 1-3 Couinaud's segments	864.04 864.14	4
V	Laceration	Parenchymal disruption involving > 75% of hepatic lobe or > 3 Couinaud's segments within a single lobe		5
	Vascular	Juxtavenous hepatic injuries i.e retrohepatic vena cava/central major hepatic veins		5
VI	Vascular	Hepatic avulsion		6

*Advance one grade for multiple injuries up to grade III

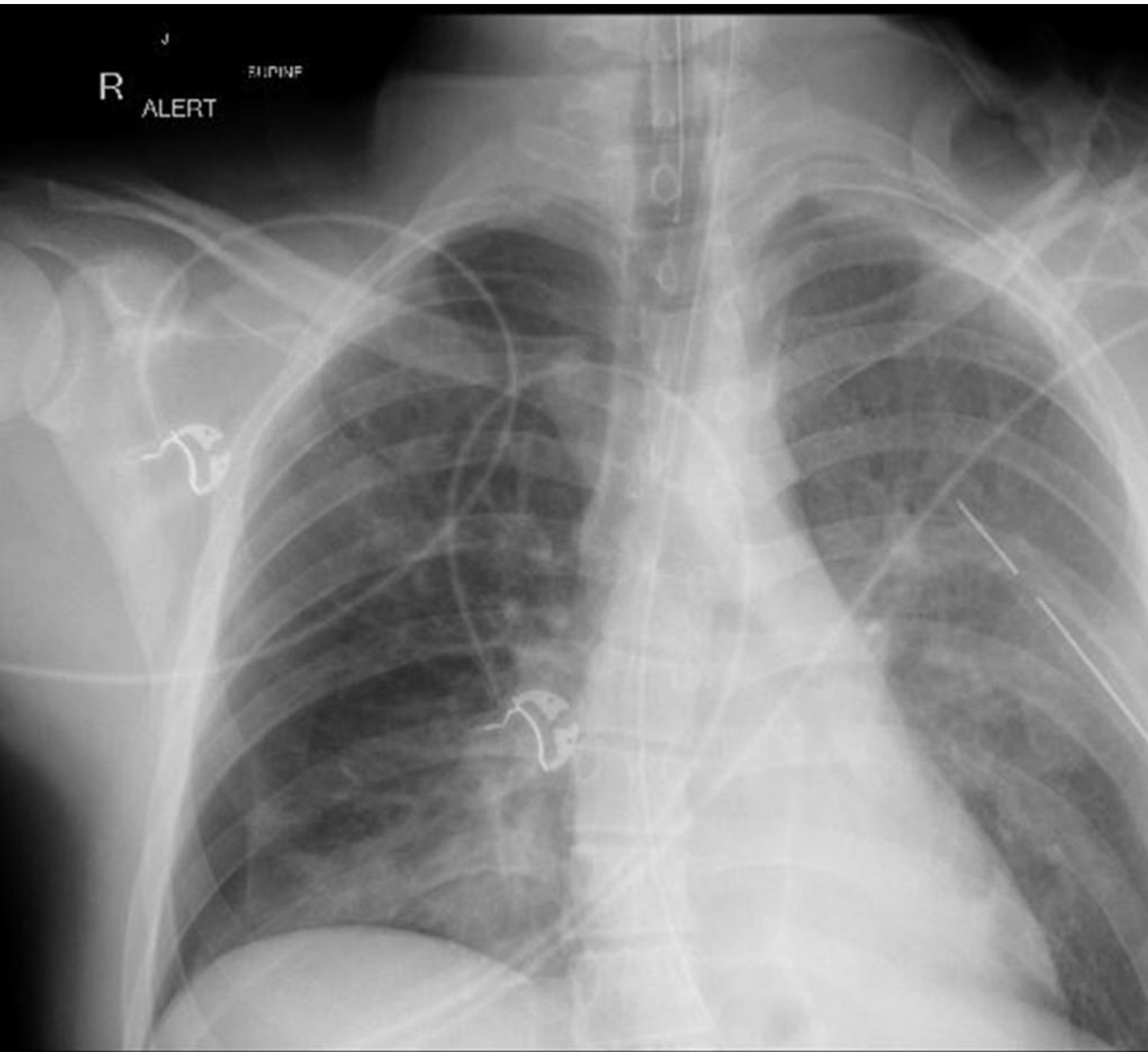
Question 5

AAST Kidney injury scale (1994 revision)

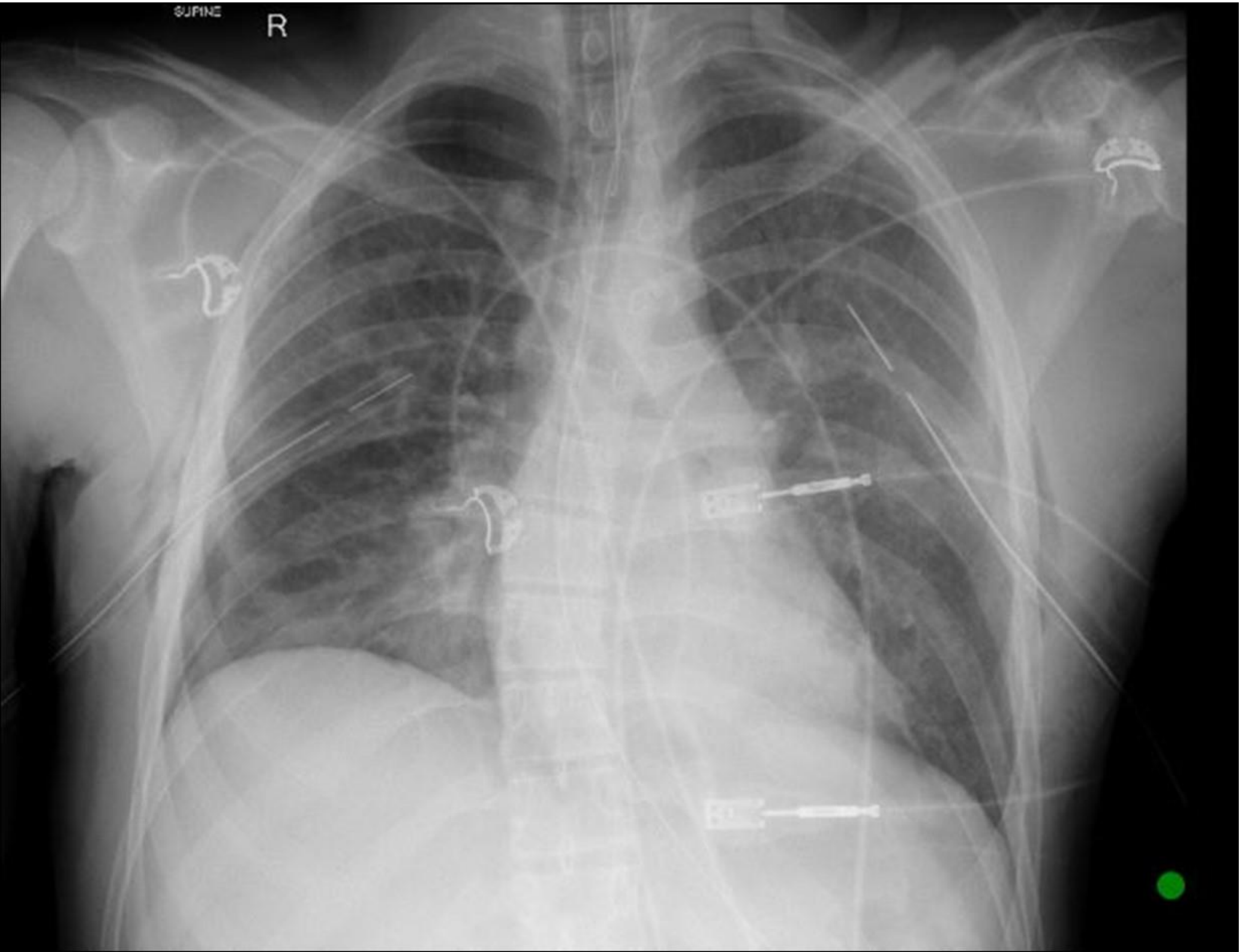
Grade*	Type of injury	Description of injury	ICD-9	AIS-90
I	Contusion	Microscopic or gross hematuria, urologic studies normal	866.01	2
	Hematoma	Subcapsular, nonexpanding without parenchymal laceration	866.11	2
II	Haematoma	Nonexpanding perirenal hematoma confirmed to renal retroperitoneum	866.01 866.11	2
	Laceration	< 1.0 cm parenchymal depth of renal cortex without urinary extravagation	866.02 866.12	2
III	Laceration	< 1.0 cm parenchymal depth of renal cortex without collecting system rupture or urinary extravagation	866.02	3
	Laceration	Parenchymal laceration extending through renal cortex, medulla, and collecting system	866.12	3
IV	Vascular	Main renal artery or vein injury with contained hemorrhage		4
V	Laceration	Completely shattered kidney	866.03	5
	Vascular	Avulsion of renal hilum which devascularizes kidney	866.13	5

*Advance one grade for bilateral injuries up to grade III

Question 6a: Repeat CXR



Question 6a: Post R ICC CXR



Question 8: Proximal splenic artery embolization

