

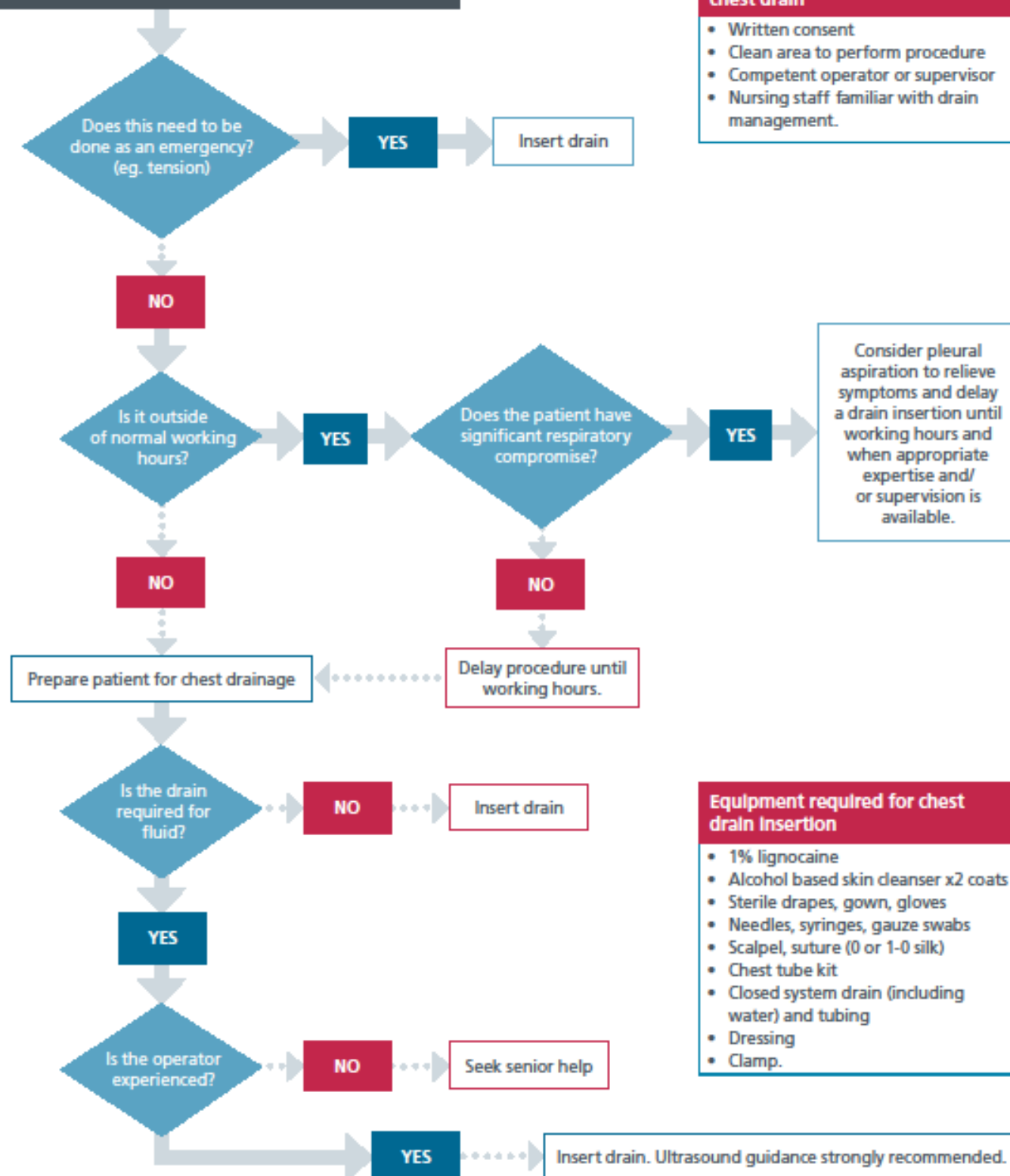
**Heimlich valve**



# Appendices

## Appendix 1 - Insertion of chest drain

Pneumothorax or pleural fluid requiring drainage



### Requirements for Insertion of chest drain

- Written consent
- Clean area to perform procedure
- Competent operator or supervisor
- Nursing staff familiar with drain management.

Consider pleural aspiration to relieve symptoms and delay a drain insertion until working hours and when appropriate expertise and/or supervision is available.

### Equipment required for chest drain Insertion

- 1% lignocaine
- Alcohol based skin cleanser x2 coats
- Sterile drapes, gown, gloves
- Needles, syringes, gauze swabs
- Scalpel, suture (0 or 1-0 silk)
- Chest tube kit
- Closed system drain (including water) and tubing
- Dressing
- Clamp.